

#3

1221 S. Diane Street, Chilton

**Directions from Chilton:**

Take Hwy 151, East of Chilton Furniture, turn Right (South) onto Diane Street. The House is at the top of the hill on the right.

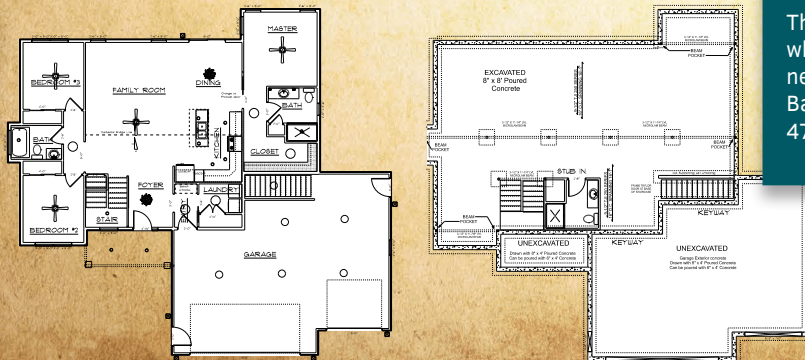
*K & J Construction and Design, LLC**Cozy Modern Ranch*

In partnership with Thiel Real Estate, K&J Construction and Design, LLC is proud to present this beautiful 3 Bedroom, 2 Bath, 1549 Sq. Ft. Ranch home with attached 926 Sq. Ft. three stall garage with garage to basement access.

**EXTERIOR:** Certainteed vinyl siding in Granite Gray with Colonial White corners and trims. Rollex Snowmist soffit and fascia. Certainteed Landmark Georgetown Gray shingles. Stone Master Roma manufactured stone veneer in a Grey-Mix has been installed on the front porch.

**BEHIND THE SCENES:** 2X6 exterior walls, with 1" Spray Foam insulation and batts for an R-Value of 23 with R50 ceilings.

**INTERIOR:** Split bedroom layout with an open kitchen to living room concept, with a cathedral ceiling. Kitchen cabinetry has an Espresso finish with Formica High Definition countertops. Light fixtures have a more modern feel in brushed nickel. Separate laundry room with large closet off the garage entry with a bench for seating. Interior doors are English Chestnut and trim is white. Floorings through main areas are wood laminate, baths are vinyl tile and bedrooms and stairs are carpeting. The back of the house faces the South, so the house has lots of natural lighting.



K & J Construction and Design, LLC welcomes you to our 2018 Parade of Homes. We are excited to show you this home and hope you enjoy it!

K & J Construction and Design, LLC has been servicing Chilton and surrounding areas for over 20 years. We are a small company, which believes in personalized construction. We have made it our mission to ensure that your new home or remodel is as stress free as possible. We do this by staying involved in the project from the beginning to the end. We have design services available and the latest in computer technology so that you don't have to leave your imagination do the work. No idea is turned away!

We also work with home owners who wish to do some of the work themselves or have contacts they wish to use. We look forward to the opportunity to work with you on your project!

This fall, watch for our new office, which will be located in Chilton, in a new subdivision south of Wisconsin Bank and Trust. The address will be 475 Tower View Drive, Chilton.

**Subcontractors and Suppliers:**

Chilton Furniture\*  
Dennis Thiel Builders\*  
Drexel Building Supply\*  
Foam Pros, LLC  
G.W. Construction LLC  
Jannette Trucking & Excavating, Inc\*  
Mid-Shores Disposal\*  
Nadler Tile & Flooring  
Schmitz Plumbing, LLC  
State Bank of Chilton\*  
Thiel Real Estate\*

\*Member, Mid-Shores Home Builders Association Inc.